




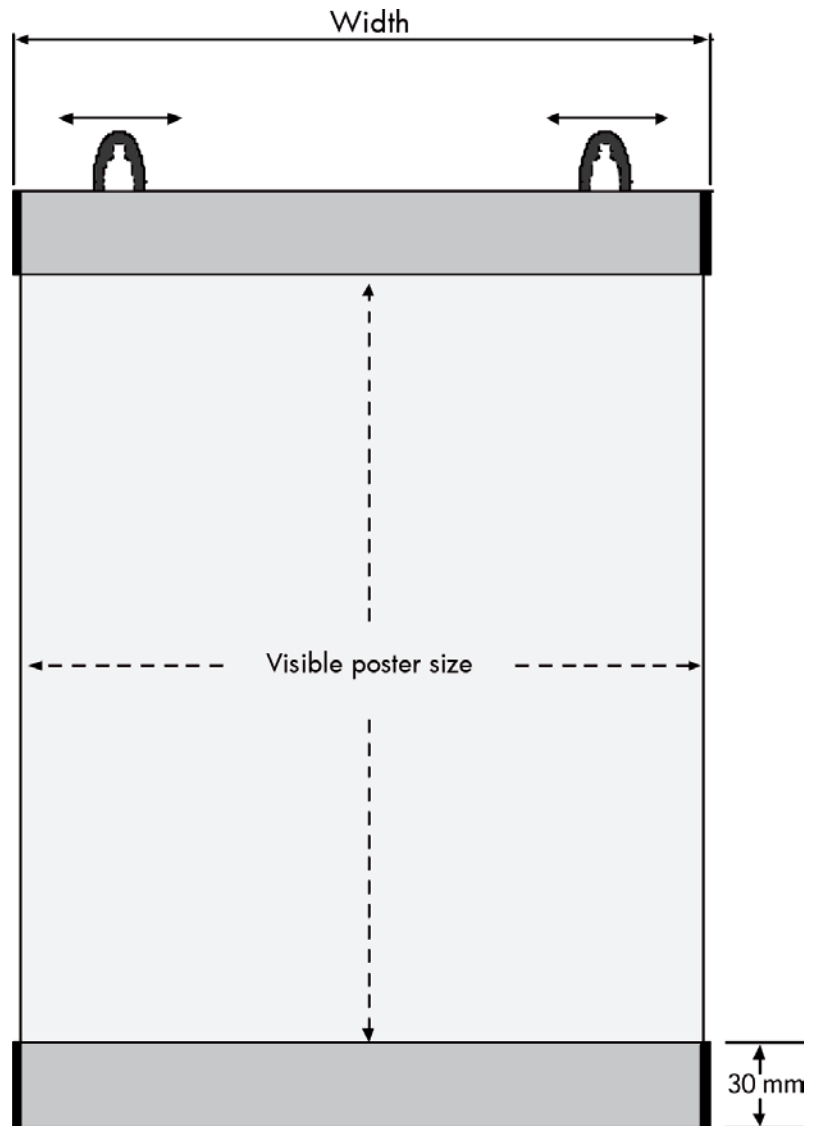


FOR HEAVIER
BANNER
MATERIALS
50 - 500 MICRON

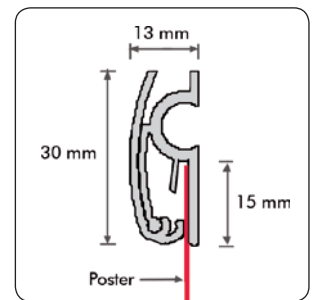
 30 mm alu banner- and posterlist set with endcaps and 2 plastic hangers for wall or ceiling. Suitable for heavier materials. The profiles are available in 3 metres lengths for customized production (model 275).

 30 mm Alu Banner- und Posterleiste Satz. Inkl. Endkappen und 2 schwarze Kunststoff Aufhängehaken für Wand- oder Deckenbefestigung. Für schwerere Materialien geeignet. Die Profile sind in 3-Meter-Längen für kunden-spezifische Anfertigung (Modell 275).

 30 mm alu plakat- og bannerop-hængssæt. Inkl. endekapper og 2 flexible, sorte plastikkroge til væg- eller loftophængning. Velegnet til ophæng af tungere materiale. Profilerne kan leveres i 3 meters længde til specialfremstilling (model 275).



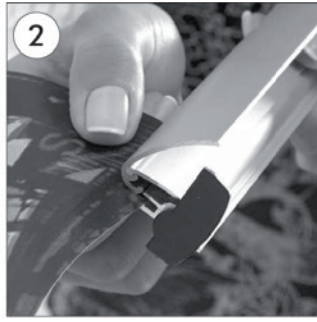
* Grip top/bottom: The part of the poster/banner that will be covered by the profile and not visible.



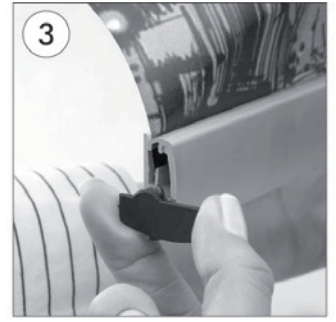
| Model | Art.no. | Poster width | Grip top* | Colour | Total width | Package size and weight | | Pallet size and quantity | |
|-------|---------|--------------|--------------|------------|-------------|-------------------------|--------|--------------------------|-----------|
| 251 | 6105 | 21,0 cm | 1,5 + 1,5 cm | Alu/silver | 21,6 cm | 22 x 26 x 3,2 cm | 0,2 kg | 80 x 120 x 220 cm | 4000 pcs. |
| - | 6106 | 29,7 cm | - | - | 30,3 cm | 22 x 36 x 3,2 cm | 0,3 kg | 80 x 120 x 220 cm | 3050 pcs. |
| - | 6107 | 42,0 cm | - | - | 42,6 cm | 22 x 48 x 3,2 cm | 0,5 kg | 80 x 120 x 220 cm | 2400 pcs. |
| - | 6108 | 50,0 cm | - | - | 50,6 cm | 22 x 56 x 3,2 cm | 0,5 kg | 80 x 120 x 220 cm | 2400 pcs. |
| - | 6109 | 59,4 cm | - | - | 60,0 cm | 22 x 66 x 3,2 cm | 0,6 kg | 80 x 120 x 220 cm | 1600 pcs. |
| - | 6110 | 70,0 cm | - | - | 70,6 cm | 22 x 76 x 3,2 cm | 0,7 kg | 80 x 120 x 220 cm | 1450 pcs. |
| - | 6111 | 84,1 cm | - | - | 84,7 cm | 22 x 91 x 3,2 cm | 0,9 kg | 80 x 120 x 220 cm | 1000 pcs. |
| - | 6112 | 100,0 cm | - | - | 100,6 cm | 22 x 107 x 3,2 cm | 1,0 kg | 80 x 120 x 220 cm | 1000 pcs. |
| - | 6113 | 120,0 cm | - | - | 120,6 cm | 22 x 126 x 3,2 cm | 1,2 kg | 80 x 130 x 220 cm | 1000 pcs. |



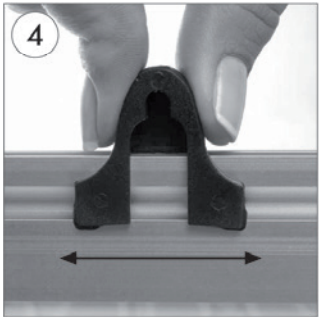
- Turn the endcaps on the edge of the clamp profile.
- Öffnen Sie die Endkappen durch Eigenachsendrehung auf.



- Open the profile and slide the poster, through the profile.
- Öffnen Sie das Profil auf und schieben Sie das Profil durch den Kanal.



- Close the profile and the endcaps.
- Schliessen Sie das Profil und die Endkappen zu.



- Adjust the position of the hangers.
- Stellen Sie den Abstand durch Zusammendrücken und Verschieben ein.

